

# FLL Stadium Light Datasheet



## Key Features

- ⇒ **Efficacy:** Up to 160 lm/w
- ⇒ **LED Chip:** SMD5050
- ⇒ **SDCM:** <5
- ⇒ **Beam Angle:** 20°|40°|60°|90°|140°x100° PC lens
- ⇒ **IP Rated:** IP65
- ⇒ **Installation:** Bracket
- ⇒ **Certifications:** CE, RoHS
- ⇒ **Warranty:** 7 years

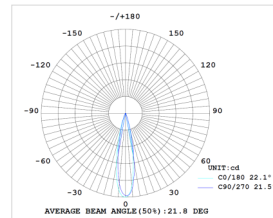
## Application

Large stadium, all kinds of large stadium, ships, squares, docks, airports, commercial sites, overpass, outdoor advertising, landmarks and other large panoramic lighting.

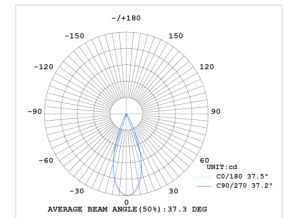
## Photometry



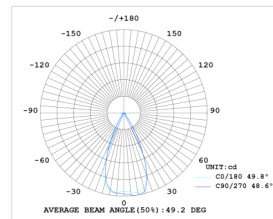
20° PC lens



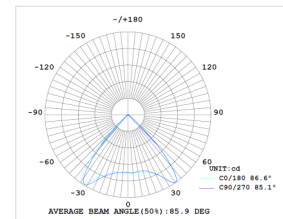
40° PC lens



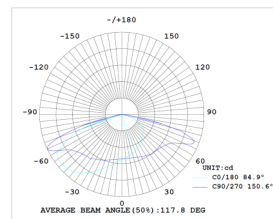
60° PC lens



90° PC lens



140°x100° PC lens



# FLL Stadium Light Datasheet

## Product Data

Model No.	KML-FL720L	KML-FL960L	KML-FL1200L	KML-FL1500L
Power	720W	960W	1200W	1500W
Lumen Output	115,200 lm	153,600 lm	192,000 lm	240,000 lm
Luminous Efficacy	160 lm/w			
CCT	3000K 4000K 5000K 5700K 6500K			
CRI	Ra≥70 (Ra≥80 optional)			
Input Voltage	100-277 VAC			
Housing Color	Black & Silver			
Housing Material	Die-cast Aluminum, PC lens			
Operating Temperature	-30°C to +50°C			
Operating Humidity	10% to 90% RH			
Lifespan	100,000 hours			
Warranty	7 years			

## ErP Technical Specification

Item	Specification/Data
Efficiency In	>90%
Power Factor	PF>0.90
Energy Efficiency Class	D
Standard Deviation of Color Matching	<5
Starting Time	<0.2S
Warm-up Time to 60%	<0.5S
Lumen Maintenance at e.o.l.	>70%
Lifetime	L70/B10@100,000hours

**Note: 1. The above parameters will have errors within the allowable range of relevant standards.  
2. This specification book is for reference only. We retains the right to optimize and modify without pre-notification!**



[www.kmlled.com](http://www.kmlled.com)

Add: Room 901, Building A, FuBiLun Industrial Park, ChaoYang Road, YanChuan Community, YanLuo Street, Bao'an, ShenZhen City, China.

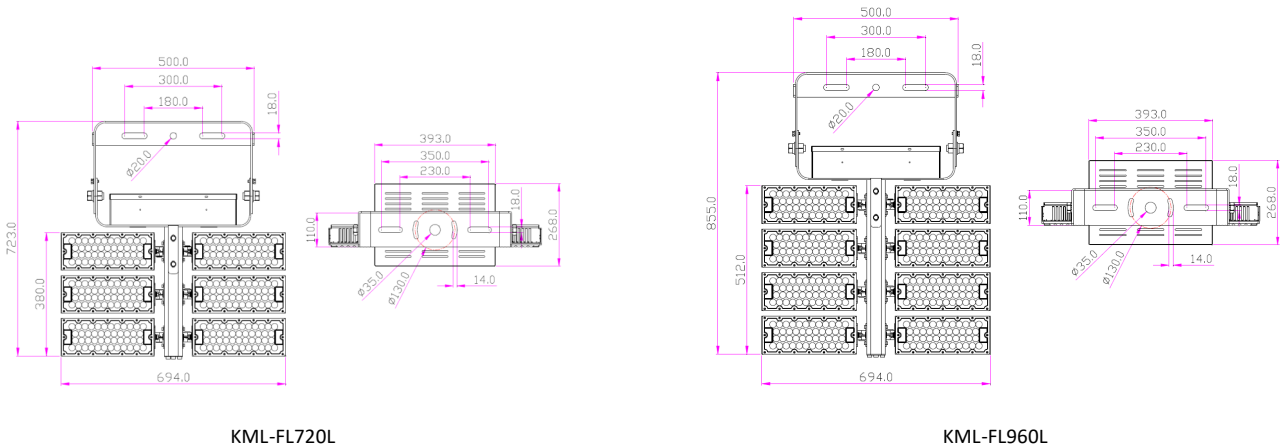
# FLL Stadium Light Datasheet

## Packaging

Model No.	PCS/CTN	N.W	G.W	Volumetric Weight	Carton Size and Volume	20GP(28m³)	40HC/HQ (68m³)
KML-FL720L	1PCS	26.0 kg	28.0 kg	53.0 kg	L862xW467xH657 mm ≈ 0.264 m <sup>3</sup>	106 CTNS	257 CTNS
KML-FL960L	1PCS	28.0 kg	30.5 kg	63.5 kg	L862xW467xH789 mm ≈ 0.318 m <sup>3</sup>	88 CTNS	213 CTNS
KML-FL1200L	1PCS	34.0 kg	37.0 kg	74.2 kg	L862xW467xH921 mm ≈ 0.371 m <sup>3</sup>	75 CTNS	183 CTNS
KML-FL1500L	1PCS	38.0 kg	41.5 kg	85.0 kg	L862xW467xH1053 mm ≈ 0.424 m <sup>3</sup>	66 CTNS	160 CTNS

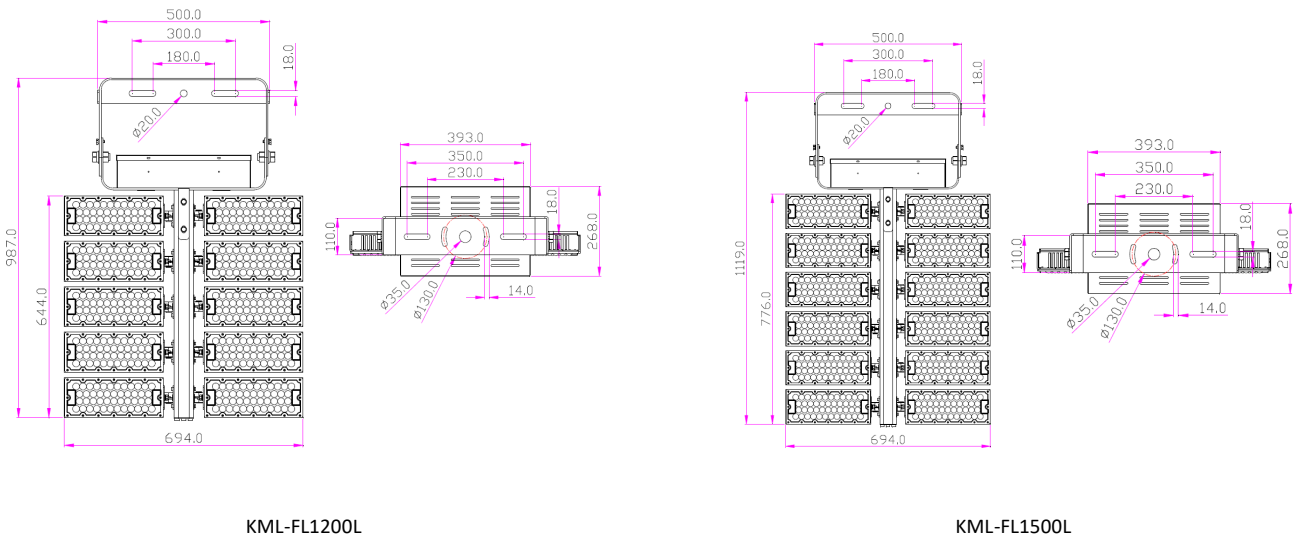
**Remarks:** The weight of the above products is for reference only, and the weight of different configuration products will be different.

## Dimension (unit: mm)



KML-FL720L

KML-FL960L



KML-FL1200L

KML-FL1500L

# FLL Stadium Light Datasheet

## Packaging Image

